



2024 SOLUTIONS CATALOG

January 2024



Dishwashers



Scan the QR code to purchase parts online, or to access a digital version of this catalog.

KITCHEN SOLUTIONS

HOBART

GENUINE PARTS

Peak Performance Guaranteed!

This catalog is the go-to source for all your Hobart dishwasher maintenance, repair, and upgrade needs.

*Undercounter
Type*



*Door
Type*



*Conveyor
Type*



*Flight
Type*



Why design and offer kits? The benefits to you:

- Ready-to-go kits mean fast, no-guess ordering. There's no need to research the individual parts you need. We've done it for you.
- Fast and easy installation minimizes kitchen disruptions and labor costs.
- Replacing consumable parts with those in the kit at the recommended frequency:
 - ✓ Results in fewer service calls and lower service costs.
 - ✓ Promotes operating efficiency, thus sanitization.
 - ✓ Reduces water and electrical usage (heat), thus utility costs.
 - ✓ Optimizes consumer health, worker safety, and kitchen uptime.
 - ✓ Extends machine life and your equipment investment.
- Hobart recommends replacing consumable parts every 6 months. See Maintenance Kits.
- Kits are priced to save buyers 15% to 30% in parts cost compared to buying parts individually.

CONTENTS by MODEL

	Page No.
Undercounter Type	4
LXE.....	4-6
LXI.....	7
Door Type	8
AM15.....	8
Conveyor Type	9
C44A, C54A.....	9
C64A.....	9
CL44e, CL54e.....	9
CL44eN, CL54eN.....	9
CL64e.....	9
CL64eN.....	9-10
CLe, CLeN Prewash Unit.....	10
ClineA Prewash Unit.....	10
CLPS66e, CLPS76e.....	11
CLPS66eN, CLPS76eN, CLCS66eN, CLCS76eN.....	11
CLPS86e.....	11
CLPS86eN, CLCS86eN.....	12
CRS66A, CRS76A.....	12
CRS86A, CCS86A.....	12
Flight Type	13
FT900.....	13
FT1000.....	13
All Models	14
Recommended universal items.	



UNDERCOUNTER TYPE



HOBART

GENUINE PARTS

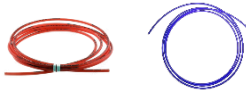


To price and order,
visit HobartParts.com
or call (877)333-1863



LXEH (Standard): Chemical Delivery Kit
Item 00-978900-40005

- 4 CHEMICAL TUBE KIT, 7.25"
- 1 KIT, CAPS, CHEMICAL
- 1 TUBING, RED, 144" (DETERGENT)
- 1 TUBING, BLUE, 144" (RINSE AID)



LXE (Standard): Wash/Rinse Arm Refurb Kit
Item 00-978900-40009

- 2 HUB-WASH ARM
- 4 SCREW, DRIVE, TYPE B 10-16 X 3/8
- 2 ASSY, RINSE ARM, BASE
- 2 GASKET, RINSE ARM, BASE
- 4 SCREW, SELF TAPPING



LXEC (Standard): Chemical Delivery Kit
Item 00-978900-40006

- 4 CHEMICAL TUBE KIT, 7.25"
- 1 KIT, CAPS, CHEMICAL
- 1 TUBING, RED, 144" (DETERGENT)
- 1 TUBING, BLUE, 144" (RINSE AID)
- 1 TUBING, CLEAR, 144" (SANITIZER)



**LXER/LXGER (ADVANSYS) BEFORE S/N 231241304:
Wash/Rinse Arm Refurb Kit**
Item 00-978900-40010

- 2 HUB - WASH ARM (BEFORE SN 231241304)
- 2 BUSHING - HUB (WASH ARM)
- 4 SCREW, DRIVE, TYPE B 10-16 X3/8
- 4 SCREW, SELF TAPPING



**LXEPR, LXER, LXESPR, LXESR, LXGER (Advansys):
Chemical Delivery Kit**
Item 00-978900-40007

- 4 CHEMICAL TUBE KIT, 7.25"
- 1 KIT, CAPS, CHEMICAL
- 1 TUBING, RED, 144" (DETERGENT)
- 1 TUBING, BLUE, 144" (RINSE AID)
- 1 TUBING, BLACK, 144" (DELIME)



**LXER/LXGER (ADVANSYS) AS OF S/N 231241304:
Wash/Rinse Arm Refurb Kit**
Item 00-978900-40011

- 2 HUB - WASH ARM (STARTING SN 231241304)
- 2 BUSHING - HUB (WASH ARM)
- 4 SCREW, DRIVE, TYPE B 10-16 X3/8
- 4 SCREW, SELF TAPPING



LXGEPR (Advansys): Chemical Delivery Kit
Item 00-978900-40008

- 4 CHEMICAL TUBE KIT, 7.25"
- 1 KIT, CAPS, CHEMICAL
- 1 TUBING, RED, 144" (DETERGENT)
- 1 TUBING, BLUE, 144" (RINSE AID)
- 1 TUBING, BLACK, 144" (DELIME)
- 1 TUBING, CLEAR, 144" (SANITIZER)
- 1 ASSY., CAP, CHEMICAL BOTTLE



UNDERCOUNTER TYPE



HOBART

GENUINE PARTS



To price and order,
visit HobartParts.com
or call (877)333-1863



LXEC, LXEH, LXER: Second Level Rack Upgrade Kit Item 00-563749

- 1 RACK SUPPORT
- 1 SECOND LEVEL WIRE RACK
- 2 SILVERWARE BASKET



LXe SERIES SECOND LEVEL RACK KIT

Speed up your dishwashing & get staff out early

Wash more ware in less time with the only NSF certified two-level racking solution for commercial undercounter dishwashers. The Hobart LXe Second Level Rack Kit adapts your LXe™ Series undercounter to boost throughput to 48 racks/hour, speeding up your dishroom to help staff get done early.

BOOST
CAPACITY TO
48
RACKS/HOUR

SAVE UP TO
\$450
PER YEAR ON
OPERATING COSTS*

KIT INCLUDES



RACK SLIDER, AND
ONE WIRE RACK WITH
TWO SILVERWARE
INSERTS.



The only NSF certified two-level racking solution helps ensure your ware is fully cleaned and sanitized.

Great solution for mixed-ware environments. Wash plates and silverware up top, and glasses, pans, and silverware on the bottom.

Fits new LXe series models with integrated second level track.

Easily remove the kit when you need to wash larger prep ware.

Replacement rack available with wire rack and two silverware inserts.

*Projected average annual savings for LXeR vs. LXeH running 50 racks per day with liquid chemicals and gas facility heat. LXeR includes 2 level operation and VeriSense Energy Recovery.
**Compatible with new LXe series undercounters with integrated second level track.
Two-Level Rack Operation: Upper rack NSF approved for plates and silverware. Lower rack NSF approved for all ware items. Single Rack Operation: NSF approved for a liware items.



Ready to Achieve Hobart Clean?

Call 888-4Hobart (888-446-2278) or contact us online today
www.hobartcorp.com/LXe to get more information or to receive a quote.



LXEC, LXEH, LXER: Second Level Replacement Rack Item 00-563749-00002

- 1 RACK, 2ND LEVEL W/SILVERWARE INSERTS

Compatible with undercounters where a second-level rack is already installed.



Warehouse, Piqua OH

UNDERCOUNTER TYPE



HOBART

GENUINE PARTS



To price and order,
visit HobartParts.com
or call (877)333-1863



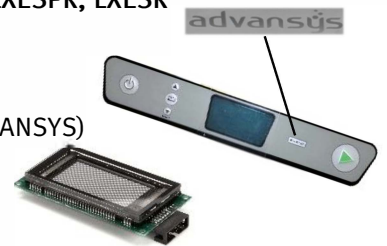
LXEC, LXEH, LXEPR, LXER, LXESPR, LXESR
(Standard): Display Kit
Item 00-978900-40014

- 1 KEYPAD - MEMBRANE (STANDARD)
- 1 DISPLAY, GRAPHIC



LXEC, LXEH, LXEPR, LXER, LXESPR, LXESR
(Advansys): Display Kit
Item 00-978900-40015

- 1 KEYPAD - MEMBRANE (ADVANSYS)
- 1 DISPLAY, GRAPHIC



LXE: Recommended Items

Item	Description
00-941546-00001	KEYPAD - MEMBRANE (ADVANSYS)
00-941546-00002	KEYPAD - MEMBRANE (STANDARD)
00-563549	DISPLAY, GRAPHIC
00-271008	VACUUM BREAKER (3/8IN)
00-941638-00002	PUMP CHEMICAL BLUE (RINSE AID)
00-941638-00004	PUMP CHEMICAL GREEN (DELIME)
00-949306-00002	ASSY., CAP, CHEMICAL BOTTLE
01-240003-00002	STRAINER, FINE
00-949651-00001	HOSE, P-PUMP, SERVICE, LXe 7.25"
00-913102-00327	KIT, CHEMICAL AIR GAP ADAPTER
00-913102-00496	KIT, CHEMICAL AIR GAP ADAPTER (COLD/ADV)



OEM PARTS



NATIONWIDE
AVAILABILITY



SAME DAY
SHIPPING

(ALL IN-STOCK PARTS
ORDERED BY 8 PM ET)



DEDICATED
CUSTOMER
SUPPORT

UNDERCOUNTER TYPE



HOBART

GENUINE PARTS



To price and order,
visit HobartParts.com
or call (877)333-1863



LXI: Display Kit

Item 00-978900-40001

- 1 KEYPAD - MEMBRANE (STANDARD)
- 1 BEZEL, DISPLAY
- 12 GASKET, RING
- 12 RECEIVER, STUD



LXI, LXIG (Standard): Wash Arm Refurb Kit

Item 00-978900-40004

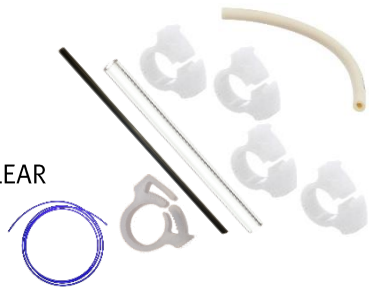
- 2 SHAFT - WASH ARM
- 2 NUT - WASH ARM
- 2 GUIDE - WASH ARM
- 2 NUT - WASH ARM
- 1 RETAINING RING
- 1 RESTRICTOR PLATE (LXG/LXIG)



LXC, LXGC, LXIC, LXIGC (Cold): Sanitizer Delivery Kit

Item 00-978900-40002

- 1 TUBING, CHEMICAL PU
- 4 CLAMP - HOSE 3/8
- 1 TUBING, BLUE, 144"
- 1 TUBE-5/16", INDICATOR, CLEAR
- 1 CLAMP - HOSE 7/16
- 1 STAND PIPE



LXI: Recommended Items

Item	Description
00-913102-00298	KIT, AIR GAP
00-292909-00003	BREAKER, VACUUM 1/2 in.
00-328997-00001	STRAINER, WELDMENT
00-329871	PUMP, CHEMICAL



LX18, LX30/40, LXG, LXI, LXIG: Detergent/Rinse Aid Delivery Kit

Item 00-978900-40003

- 2 TUBING, CHEMICAL PU
- 6 CLAMP - HOSE 3/8
- 1 TUBING, BLUE, 144"
- 1 TUBING, RED, 144"
- 2 TUBE-5/16", INDICATOR, CLEAR
- 2 CLAMP - HOSE 7/16
- 2 STAND PIPE



DISCOVER WHY

Discover why Hobart Parts is your best choice for direct OEM parts for all your kitchen equipment by visiting hobartparts.com.



DOOR TYPE



HOBART

GENUINE PARTS



To price and order,
visit HobartParts.com
or call (877)333-1863



AM15: Dishwasher Maintenance Kit

Item 00-913178-00009

- 10 O-RINGS
- 2 FLOAT KITS
- 5 RETAINING RINGS
- 1 WASH ARM BUSHING
- 2 VACUUM BREAKER KIT
- 1 SET OF INSTRUCTIONS



AM15: Door Refurb Kit

Item 00-978900-40012

- 2 DOOR GUIDES
- 2 DOOR GUIDE SPACERS
- 4 SCREWS
- 4 WASHERS



DISHWASHER FAQs

Q. What aspects/sections of the machine are most prone to failure due to wear/tear parts?

A. The conveyor parts are prone to wear; particularly, the rods that the flights attach to wear down over time. Preventative inspection and maintenance can prevent unexpected downtime due to part failure.

Q. What parts are proprietary and should not be replaced with generics?

A. Hoses and vacuum breakers. Our hoses are steel and braided. Customers sometimes buy vinyl hoses elsewhere and they pay more in costs over time because these don't last as long as steel, braided hoses.

Q. How often do certain parts need to be replaced based on the duty cycle? High, low, medium?

A. Medium-duty parts have a lifecycle of 6 months. Water hardness also affects the recommended replacement frequency.

Q. What are the different use cases depending on the market segment? Is one harsher than the other?

A. High staff turnover customer sites are harsher due to a lack of education/training on equipment operations and care.

Q. What is the value of using genuine OEM parts for commercial dishwashers?

A. The answer is threefold:

1. Worker safety. Consistency of parts can better protect your people.
2. Company liability. If you use third-party parts, it violates the UL certification.
3. Curtains. Non-OEMs have fewer layers/Plys and curl more. This results in a loss of heat and sanitization and can even cause chain effects, resulting in machine failure.

OEM parts supplier of these ITW Food Equipment Group brands:

ITW FOOD EQUIPMENT GROUP



CONVEYOR TYPE



To price and order,
visit HobartParts.com
or call (877)333-1863



6-Month Maintenance Kits

Finding The Right Kit for Your Conveyor Dishwasher

When ordering kits that include curtains, Know the height of the window where the trays pass through. There are kits for two heights.

- Standard Height = 22" or less.
- Higher Than Standard = greater than 22".



Model	Height	Item	Description
C44A, C54A	Standard	00-913178-00010	O-Rings, Nozzles, Floats, Curtains
C44A, C54A	Higher Than Standard	00-913178-00025	O-Rings, Nozzles, Floats, Curtains
C44A, C54A	All Heights	00-978900-40016 (curtains not included)	O-Rings, Nozzles, Floats, Vacuum Breaker
C64A	Standard	00-913178-00011	O-Rings, Nozzles, Floats, Curtains, Vacuum Breaker
C64A	Higher Than Standard	00-913178-00026	O-Rings, Nozzles, Floats, Curtains, Vacuum Breaker
C64A	All Heights	00-978900-40017 (curtains not included)	O-Rings, Nozzles, Floats, Strainer, Vacuum Breaker
CL44e, CL54e	Standard	00-913178-00029	O-Rings, Strainer, Floats, Vacuum Breaker, Nozzles, End Caps, Curtains
CL44e, CL54e	Higher Than Standard	00-913178-00020	O-Rings, Strainer, Floats, Vacuum Breaker, Nozzles, End Caps, Curtains
CL44e, CL54e	All Heights	00-978900-40019 (curtains not included)	O-Rings, Strainer, Floats, Vacuum Breaker, Nozzles, End Caps
CL44eN, CL54eN	Standard	00-913178-00030	O-Rings, Strainer, Vacuum Breaker, Nozzles, End Caps, Curtains
CL44eN, CL54eN	Higher Than Standard	00-913178-00002	O-Rings, Strainer, Vacuum Breaker, Nozzles, End Caps, Curtains
CL44eN, CL54eN	All Heights	00-978900-40021 (curtains not included)	O-Rings, Strainer, Vacuum Breaker, Nozzles, End Caps
CL64e	Standard	00-913178-00008	O-Rings, Strainer, Floats, Vacuum Breaker, Nozzles, End Caps, Curtains
CL64e	All Heights	00-978900-40020 (curtains not included)	O-Rings, Strainer, Floats, Vacuum Breaker, Nozzles, End Caps



CONVEYOR TYPE



GENUINE PARTS



To price and order,
visit HobartParts.com
or call (877)333-1863



6-Month Maintenance Kits

Finding The Right Kit for Your Conveyor Dishwasher

When ordering kits that include curtains, Know the height of the window where the trays pass through. There are kits for two heights.

- Standard Height = 22" or less.
- Higher Than Standard = greater than 22".



Model	Height	Item	Description
CL64eN	Standard	00-913178-00005	O-Rings, Strainer, Vacuum Breaker, Nozzles, End Caps, Curtains, Floats
CL64eN	Higher Than Standard	00-913178-00006	O-Rings, Strainer, Vacuum Breaker, Nozzles, End Caps, Curtains, Floats
CL64eN	All Heights	00-978900-40022 (curtains not included)	O-Rings, Strainer, Vacuum Breaker, Nozzles, End Caps, Floats
CLe, CLeN Prewash Unit	Standard	00-913178-00018	End Caps, Floats, Curtains, O-Rings
CLe, CLeN Prewash Unit	Higher Than Standard	00-913178-00027	End Caps, Floats, Curtains, O-Rings
CLe, CLeN Prewash Unit	All Heights	00-978900-40023 (curtains not included)	End Caps, Floats, O-Rings
ClineA Prewash Unit	Standard	00-913178-00019	Floats, Curtains, O-Rings
ClineA Prewash Unit	All Heights	00-978900-40018 (curtains not included)	Floats, O-Rings



Continued on next page

CONVEYOR TYPE



To price and order,
visit HobartParts.com
or call (877)333-1863



HOBART

GENUINE PARTS



6-Month Maintenance Kits

Finding The Right Kit for Your Conveyor Dishwasher

When ordering kits that include curtains, Know the height of the window where the trays pass through. There are kits for two heights.

- Standard Height = 22" or less.
- Higher Than Standard = greater than 22".



Model	Height	Item	Description
CLPS66e, CLPS76e	Standard	Requires Both Kits: 00-913178-00029 00-913178-00018	O-Rings, Strainer, Floats, Vacuum Breaker, Nozzles, End Caps, Curtains
CLPS66e, CLPS76e	Higher Than Standard	Requires Both Kits: 00-913178-00020 00-913178-00027	O-Rings, Strainer, Floats, Vacuum Breaker, Nozzles, End Caps, Curtains
CLPS66e, CLPS76e	All Heights	00-978900-40019 00-978900-40023 (curtains not included)	O-Rings, Strainer, Floats, Vacuum Breaker, Nozzles, End Caps
CLPS66eN, CLPS76eN, CLCS66eN, CLCS76eN	Standard	Requires Both Kits: 00-913178-00001 00-913178-00018	O-Rings, Strainer, Vacuum Breaker, Nozzles, End Caps, Curtains
CLPS66eN, CLPS76eN, CLCS66eN, CLCS76eN	Higher Than Standard	Requires Both Kits: 00-913178-00002 00-913178-00027	O-Rings, Strainer, Vacuum Breaker, Nozzles, End Caps, Curtains
CLPS66eN, CLPS76eN, CLCS66eN, CLCS76eN	All Heights	Requires Both Kits: 00-978900-40021 00-978900-40023 (curtains not included)	O-Rings, Strainer, Vacuum Breaker, Nozzles, End Caps
CLPS86e	Standard	Requires Both Kits: 00-913178-00008 00-913178-00018	O-Rings, Strainer, Floats, Vacuum Breaker, Nozzles, End Caps, Curtains
CLPS86e	All Heights	Requires Both Kits: 00-978900-40020 00-978900-40023 (curtains not included)	O-Rings, Strainer, Floats, Vacuum Breaker, Nozzles, End Caps



Continued on next page

CONVEYOR TYPE



To price and order,
visit HobartParts.com
or call (877)333-1863



HOBART

GENUINE PARTS



6-Month Maintenance Kits

Finding The Right Kit for Your Conveyor Dishwasher

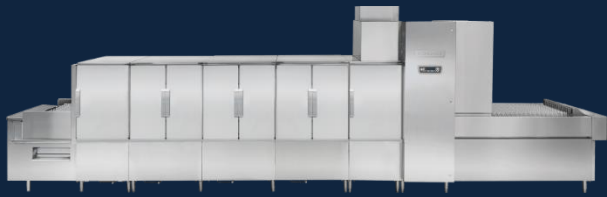
When ordering kits that include curtains, Know the height of the window where the trays pass through. There are kits for two heights.

- Standard Height = 22" or less.
- Higher Than Standard = greater than 22".



Model	Height	Item	Description
CLPS86eN, CLCS86eN	Standard	Requires Both Kits: 00-913178-00005 00-913178-00018	O-Rings, Strainer, Vacuum Breaker, Nozzles, End Caps, Curtains, Floats
CLPS86eN, CLCS86eN	Higher Than Standard	Requires Both Kits: 00-913178-00006 00-913178-00027	O-Rings, Strainer, Vacuum Breaker, Nozzles, End Caps, Curtains, Floats
CLPS86eN, CLCS86eN	All Heights	Requires Both Kits: 00-978900-40022 00-978900-40023 (curtains not included)	O-Rings, Strainer, Vacuum Breaker, Nozzles, End Caps, Floats
CRS66A, CRS76A	Standard	Requires Both Kits: 00-913178-00010 00-913178-00019	O-Rings, Nozzles, Floats, Curtains
CRS66A, CRS76A	Higher Than Standard	Requires Both Kits: 00-913178-00025 00-913178-00019	O-Rings, Nozzles, Floats, Curtains, Vacuum Breaker
CRS66A, CRS76A	All Heights	Requires Both Kits: 00-978900-40016 00-978900-40018 (curtains not included)	O-Rings, Nozzles, Floats, Vacuum Breaker
CRS86A, CCS86A	Standard	Requires Both Kits: 00-913178-00011 00-913178-00019	O-Rings, Nozzles, Floats, Curtains, Vacuum Breaker
CRS86A, CCS86A	All Heights	Requires Both Kits: 00-978900-40017 00-978900-40018 (curtains not included)	O-Rings, Nozzles, Floats, Vacuum Breaker





To price and order,
visit HobartParts.com
or call (877)333-1863



6-Month Maintenance Kits

Finding The Right Kit with Curtains for your Flight Type Dishwasher

When ordering kits that include curtains, know the height of the window where the trays pass through. There are kits for two heights.

- Standard Height = 22" or less.
- Higher Than Standard = greater than 22".

Also, know:

- Do you have a second 4' wash section? Order an Additional Wash Section Kit.
- Prisons: If you have a 'corrections' configuration (safety fasteners, hook-on curtains), order a Correctional Kit so you receive correctional curtains.



Model	Height	Item	Description
FT900	Standard	00-913178-00012	O-Rings, Floats, Vacuum Breaker, Curtains, Nozzles, Roller Conveyor Kit
FT900	Higher Than Standard	00-913178-00014	O-Rings, Floats, Vacuum Breaker, Curtains, Nozzles, Roller Conveyor Kit
FT900	All Heights	00-978900-40024 (curtains not included)	O-Rings, Floats, Vacuum Breaker, Nozzles, Roller Conveyor Kit
FT900 Additional Wash Section	Standard	00-913178-00013	O-Rings, Floats, Curtains, Roller Conveyor Kit
FT900 Additional Wash Section	Higher Than Standard	00-913178-00015	O-Rings, Floats, Curtains, Roller Conveyor Kit
FT900 for Prisons	Higher Than Standard	00-913178-00021	O-Rings, Floats, Vacuum Breaker, Grommets Curtains, Nozzles, Roller Conveyor Kit
FT900 for Prisons Additional Wash Section	Higher Than Standard	00-913178-00023	O-Rings, Floats, Grommets Curtains, Roller Conveyor Kit
FT1000/E/I	Standard	00-913178-00016	O-Rings, Floats, Rubber Bumper Grommets, Curtains, Nozzles, Roller Conveyor Kit
FT1000/E/I	Higher Than Standard	00-913178-00028	O-Rings, Floats, Rubber Bumper Grommets, Curtains, Nozzles, Roller Conveyor Kit
FT1000/E/I	All Heights	00-978900-40025 (curtains not included)	O-Rings, Floats, Rubber Bumper Grommets, Nozzles, Roller Conveyor Kit
FT1000/E/I Additional Wash Section	Standard	00-913178-00017	O-Rings, Floats, Curtains, Roller Conveyor Kit
FT1000/E/I for Prisons	Standard	00-913178-00022	O-Rings, Floats, Rubber Bumper Grommets, Curtains, Nozzles, Roller Conveyor Kit
FT1000/E/I for Prisons Additional Wash Section	Standard	00-913178-00024	O-Rings, Floats, Grommets Curtains, Roller Conveyor Kit





To price and order,
visit HobartParts.com
or call (877)333-1863



Recommended items - Not model-specific

All Models: Replacement Racks

Item	Description
00-315193	RACK, COMBINATION
00-315191	RACK, PEG
00-950266	RACK, GLASS



WHY HOBART CURTAINS



Genuine Parts

THE HOBART ADVANTAGE

- 4-ply design maintains heat and saves energy.
- Engineered for an exact fit to prevent splash out and reduce spray.
- Prevents cross-contamination between wash and rinse zone.
- Reduces water spillage on the floor.
- Helps maintain minimum NSF wash and rinse temperatures.
- Minimizes consumption and costs of water and chemicals by reducing water loss.
- NSF certified.



For access to the industry's largest inventory of OEM parts, specifically designed for your equipment
call **877-333-1863**, or visit **HobartParts.com**

THE HOBART PARTS ADVANTAGE



INDUSTRY'S LARGEST INVENTORY

100% Direct
OEM
Parts



40,000
SKUs in Stock



CUSTOMER FOCUSED



DEDICATED CUSTOMER TEAM

Your representative focused on supporting your specific needs



FULFILLMENT



NATIONWIDE
COVERAGE

98%

LINE ITEM
FILL RATE

**SAME DAY
SHIPPING**

on parts ordered before
 **8:00 P.M.**
(EASTERN TIME)



HobartParts.com

(877)333-1863

HOBART

GENUINE PARTS

**Your One Source For
ITW FEG Brands**

ITW FOOD EQUIPMENT GROUP

HOBART

VULCAN

BAXTER

Steris

Trawlser

somat
waste reduction solutions

Berkel